



UNIVERSAL SPEAKER

BS-1120W/(EU)

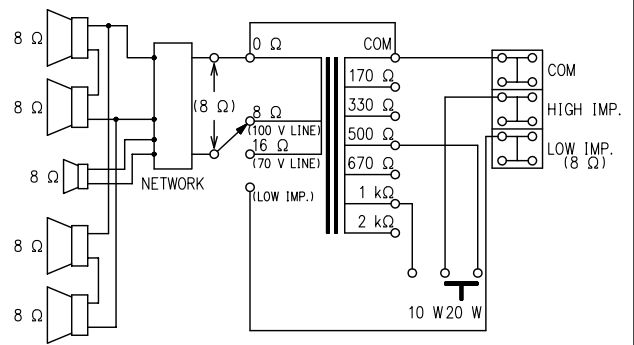
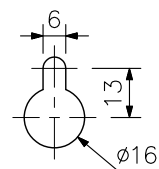
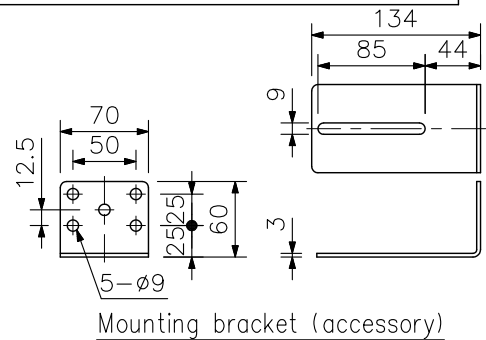
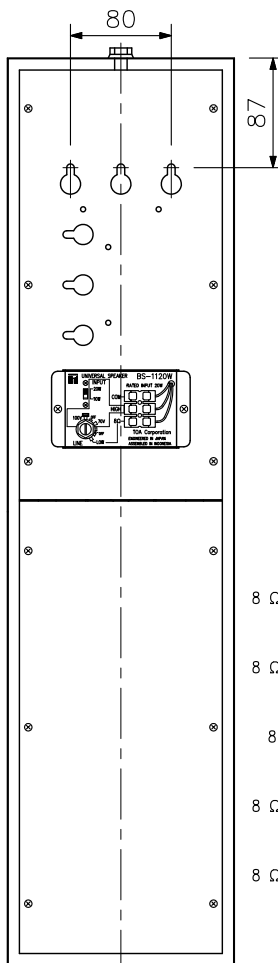
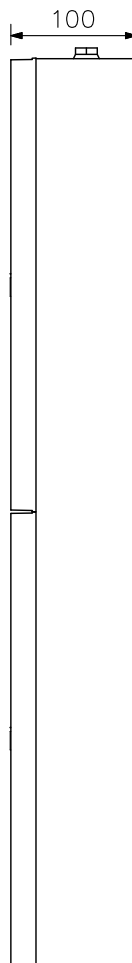
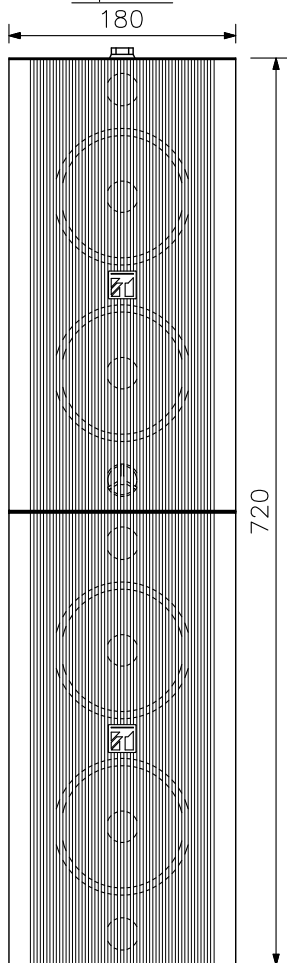
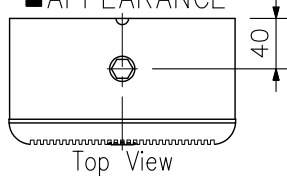
DESCRIPTION

The BS-1120W Speaker is specifically designed to reproduce clear announcements. The speaker also features a wide horizontal directivity owing to the vertical arrangement of speaker units, distributing announcements to a wider area. A built-in tweeter centered in the speaker smoothes sound reproduction up to high frequencies.

SPECIFICATIONS

Rated Input	20 W
Rated Impedance	100 V line: 500 Ω (20 W), 1 kΩ (10 W) 70 V line: 250 Ω (20 W), 500 Ω (10 W) 8 Ω (20 W)
Sound Pressure Level	95 dB (1 W, 1 m)
Frequency Response	150 Hz – 20 kHz
Speaker Component	12 cm cone-type X 4 + balanced dome-type X 1
Applicable Cables	600 V vinyl-insulated cable (1V wire or HIV wire) Solid copper wire: $\phi 0.8 - \phi 1.2$ mm 7-core twisted copper wire: 0.75 – 1.25 mm ²
Connection	Push-in connector (Bridging connections possible)
Operating Temperature	-10 °C to +50 °C
Finish	Enclosure: Plywood vinyl coating, white (RAL9010 PURE WHITE) Front: ABS resin, white (RAL9010 PURE WHITE), paint Rear: Steel plate, white (RAL9010 PURE WHITE), paint
Dimensions	180 (W) × 720 (H) × 100 (D) mm
Weight	5.1 kg (unit only)
Accessory	Mounting bracket: 2
Option	Applicable bracket: YS-301

APPEARANCE



UNIT: mm SCALE: 1/6

Wiring Diagram